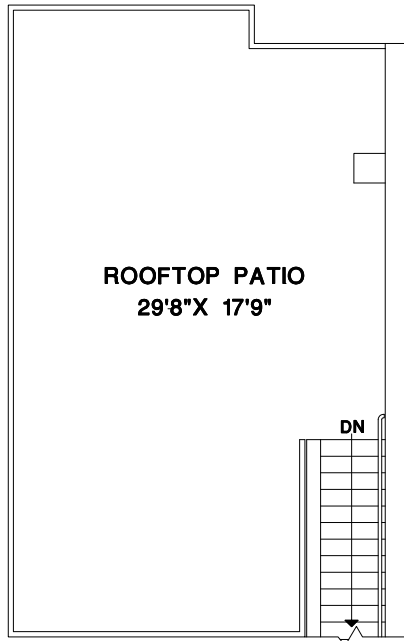


ROOFTOP PATIO



604-224-5277

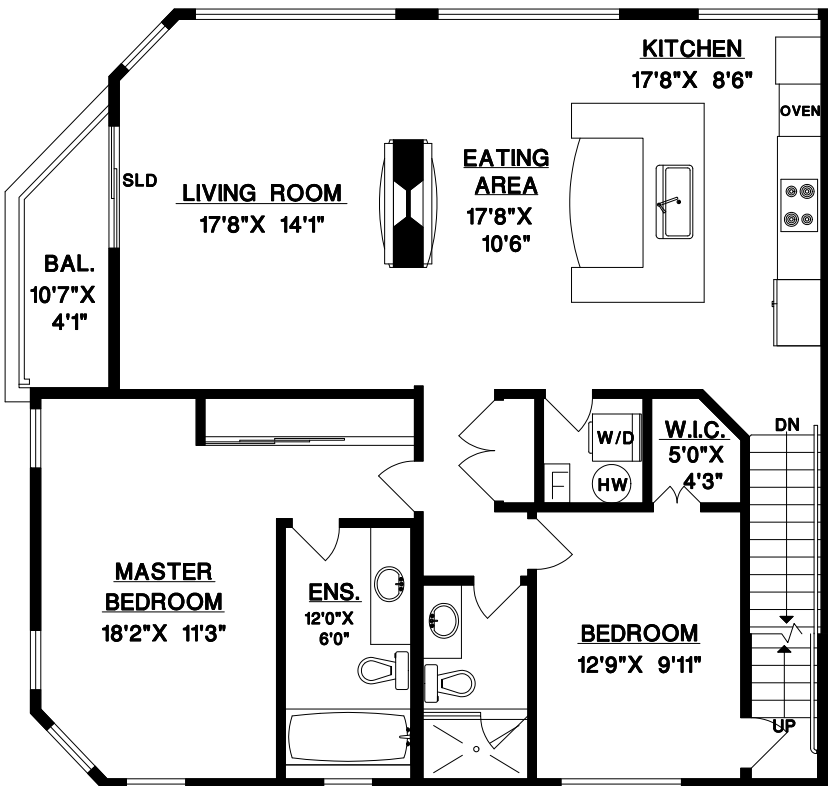
1244-C W. 7TH AVENUE
VANCOUVER, B.C.

* TOTAL 1387 SQ. FT.

ROOFTOP PATIO 477 SQ. FT.
BALCONY 49 SQ. FT.

*Area calculations obtained from
LTO, NW, Strata Plan VR 1439, SL3,
dated: September 10, 1984

MAIN FLOOR



ENTRY LEVEL

