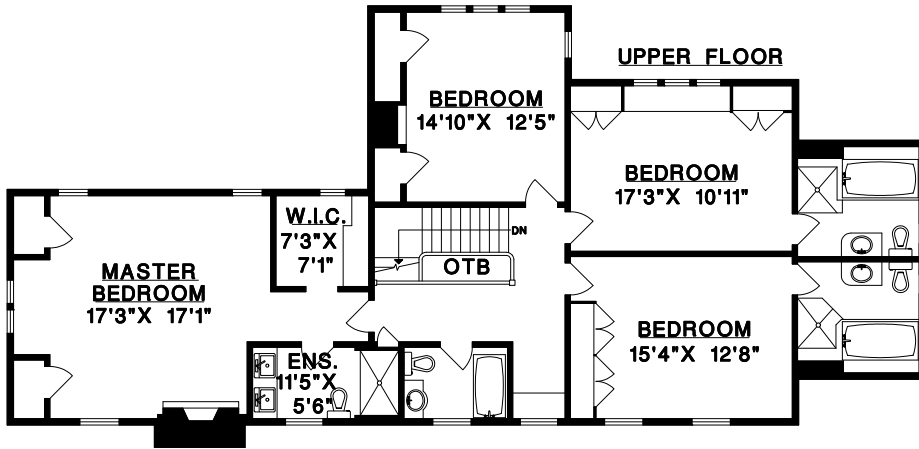


604-224-5277

**5476 ANGUS DRIVE
VANCOUVER, B.C.**



UPPER FLOOR	1691	SQ. FT.
MAIN FLOOR	1738	SQ. FT.
*BASEMENT	1704	SQ. FT.
TOTAL	5133	SQ. FT.

GARAGE	410	SQ. FT.
FRONT PORCH	198	SQ. FT.
REAR PATIO	257	SQ. FT.

POOL	795	SQ. FT.
POOL HOUSE	537	SQ. FT.
POOL H. LOFT	325	SQ. FT.

*Includes unfinished areas.

