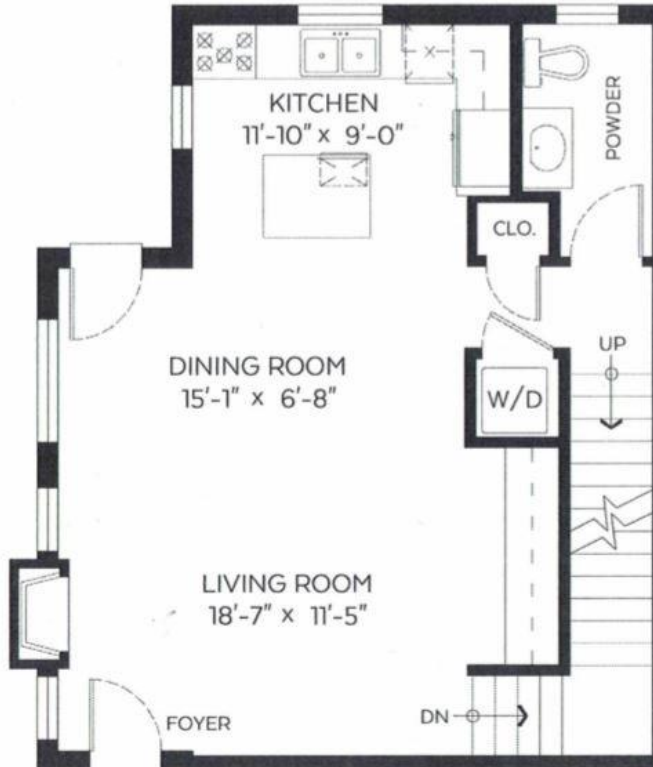


Upper Floor Plan

Floor Area: 608 sq.ft
Ceiling Height: 9 ft.



Main Floor Plan

Floor Area: 595 sq.ft
Ceiling Height: 9'-5"

1060 West 16th Avenue:

Main Floor: 595 sq.ft.

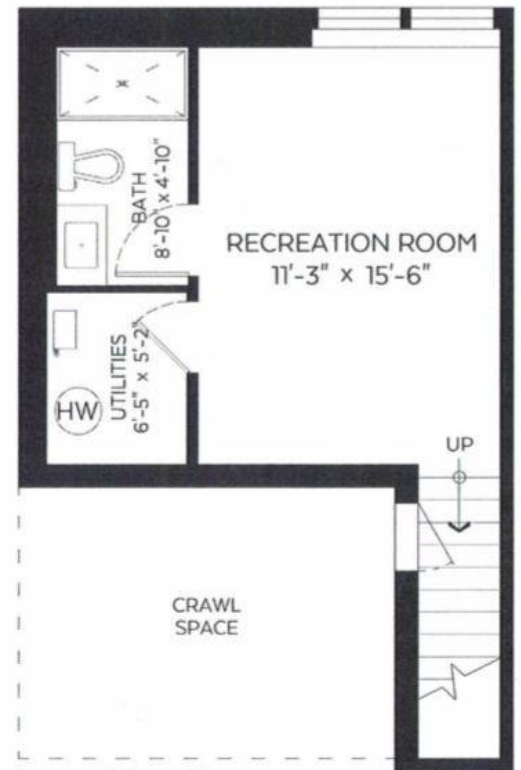
Upper Floor: 608 sq.ft.

Lower Floor: 308 sq.ft.

Total: 1,511 sq.ft.

Auxiliary Area:

Crawl Space: 239 sq.ft.



Lower Floor Plan

Floor Area: 308 sq.ft.
Ceiling Height: 8 ft.