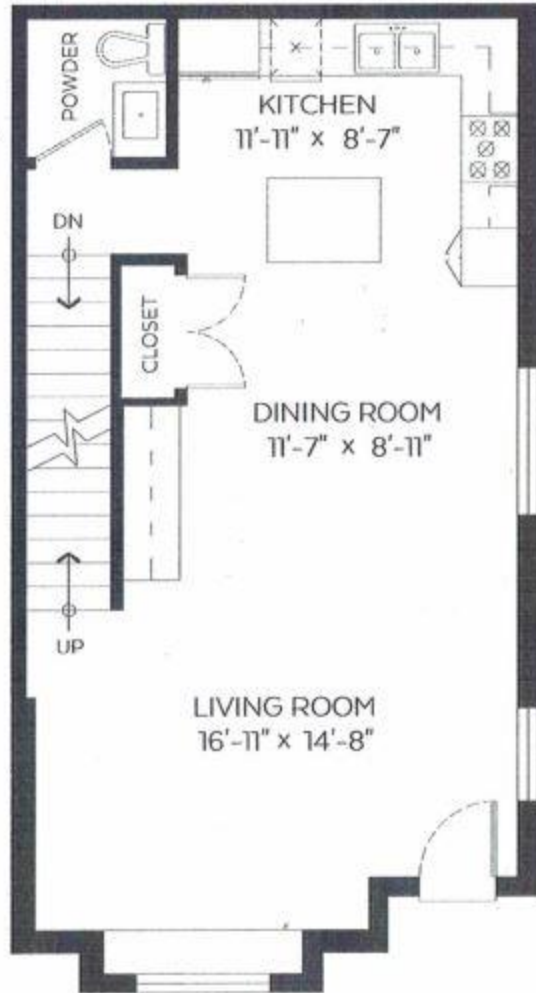


1066 West 16th Ave,
Vancouver, B.C.



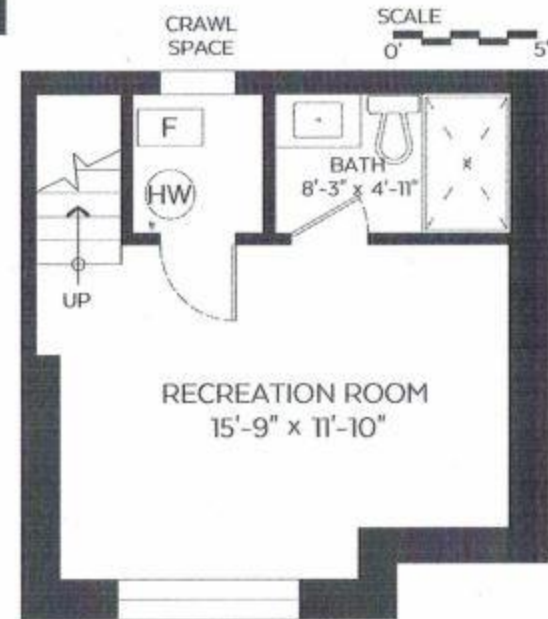
Main Floor Plan
Floor Area: 580 sq.ft
Ceiling Height: 9'-5"



Upper Floor Plan
Floor Area: 617 sq.ft
Ceiling Height: 9 ft.

Main Floor 580 sq.ft.
Upper Floor 617 sq.ft.
Lower Floor 313 sq.ft.
Total: 1,510 sq.ft.

Auxiliary Area:
Crawl Space 253 sq.ft.



Lower Floor Plan
Floor Area: 313 sq.ft.
Ceiling Height: 8 ft.