



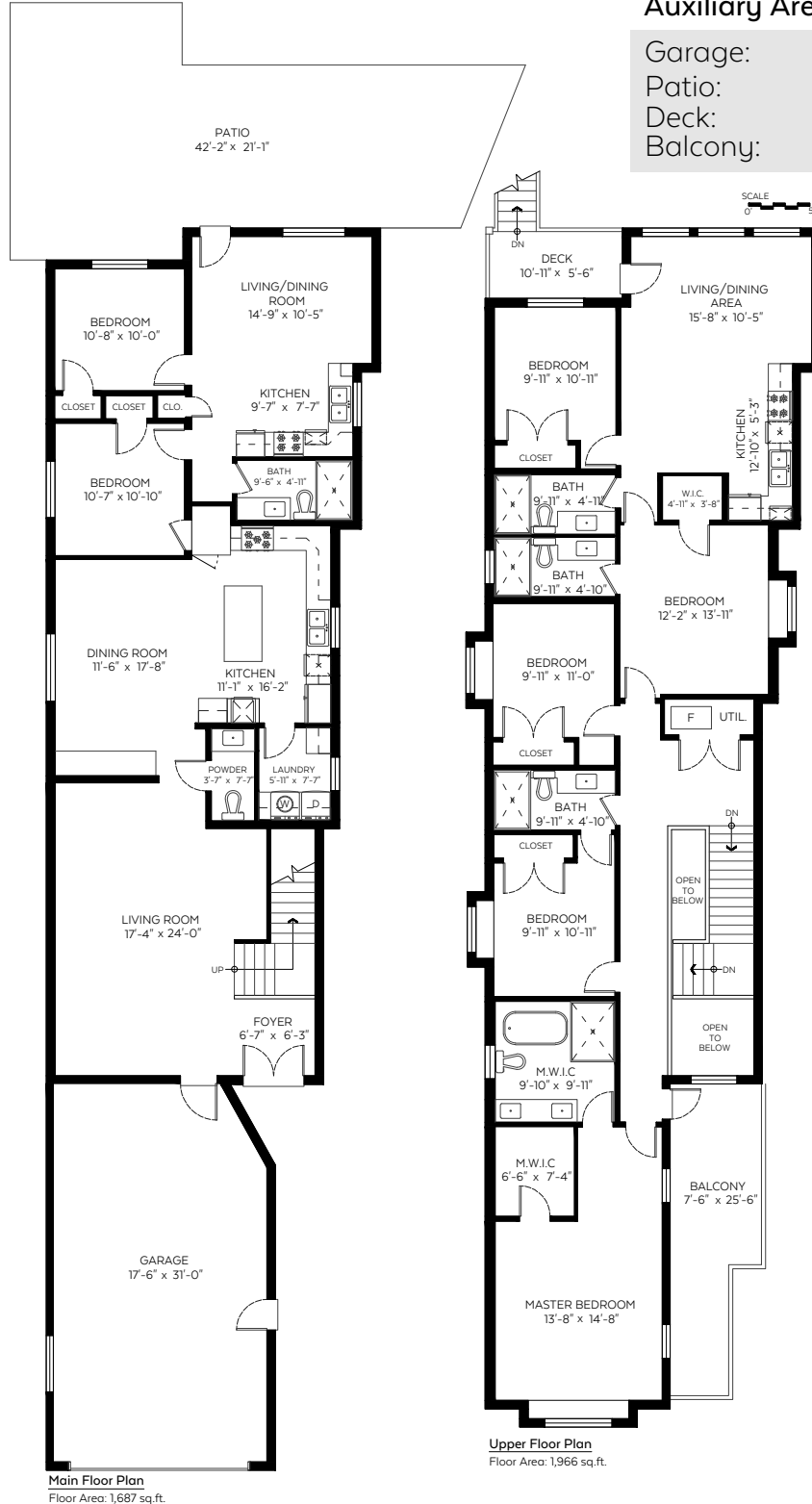
CHRISTIE'S
INTERNATIONAL REAL ESTATE

10180 Finlayson Drive,
Richmond, B.C.

Main Floor:	1,687 sq.ft.
Upper Floor:	1,966 sq.ft.
Total:	3,653 sq.ft.
Open To Below:	77 sq.ft.

Auxiliary Area

Garage:	582 sq.ft.
Patio:	636 sq.ft.
Deck:	59 sq.ft.
Balcony:	162 sq.ft.



Main Floor Plan
Floor Area: 1,687 sq.ft.

Upper Floor Plan
Floor Area: 1,966 sq.ft.

Measured on: Feb. 4, 2019



The floor plan is not suitable for architectural/construction and is covered under E&O. © Excelsior Measuring Inc. 2019. All rights reserved for Excelsior Measuring Inc. Users shall not publish and distribute such material (in whole or in part) and/or incorporate it in other works in any form.

