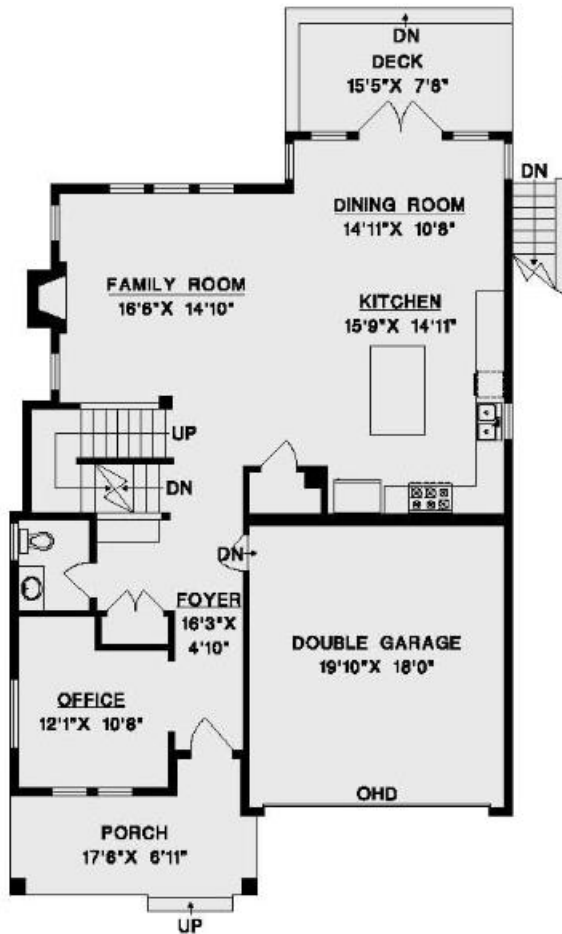
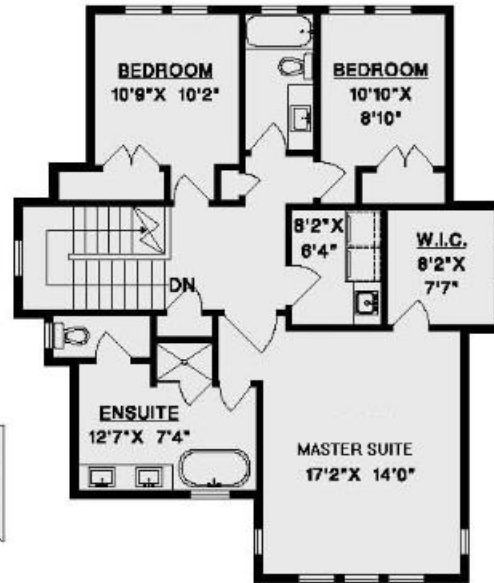


604-224-5277

**1552 129A STREET,
SURREY, B.C.**



MAIN FLOOR



UPPER FLOOR



LOWER FLOOR

UPPER FLOOR	1108 SQ. FT.
MAIN FLOOR	1173 SQ. FT.
LOWER FLOOR	1140 SQ. FT.
FINISHED AREA	3421 SQ. FT.
UNFINISHED	51 SQ. FT.
TOTAL AREA	3472 SQ. FT.

GARAGE	382 SQ. FT.
DECK	118 SQ. FT.
PORCH	131 SQ. FT.



1" = 6"
SCALE

DRAWN BY: DN
DATE: MARCH 2016
REVISED: